





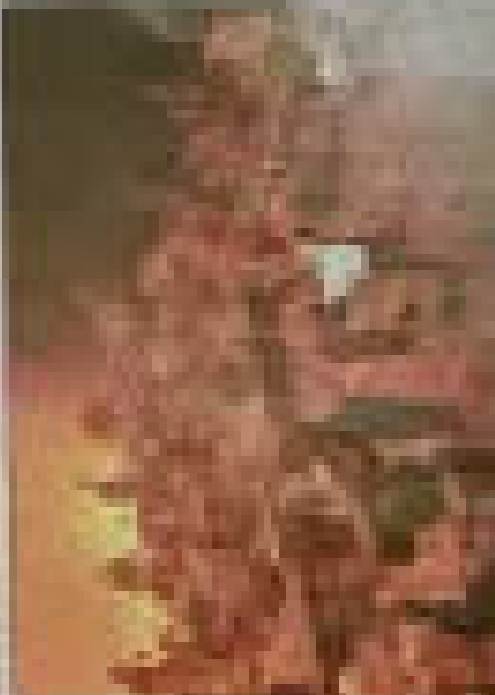
THE CHORUS OF THE UNIVERSITY OF CHICAGO, 1910



THE CHORUS OF THE UNIVERSITY OF CHICAGO, 1910



THE CHORUS OF THE UNIVERSITY OF CHICAGO, 1910



The first of these is the fact that the University of Chicago has a very large and active chorus. This chorus has been in existence since 1910 and has since that time become one of the most important features of the University's musical life. It is a chorus of about 100 members, and its repertoire is very extensive. It has given many fine performances, and its members are all well-known musicians. The chorus is a very important part of the University's musical life, and it is a great credit to the University that it has been able to maintain such a high standard of performance.

The second of these is the fact that the University of Chicago has a very large and active orchestra. This orchestra has been in existence since 1910 and has since that time become one of the most important features of the University's musical life. It is an orchestra of about 100 members, and its repertoire is very extensive. It has given many fine performances, and its members are all well-known musicians. The orchestra is a very important part of the University's musical life, and it is a great credit to the University that it has been able to maintain such a high standard of performance.

The third of these is the fact that the University of Chicago has a very large and active opera company. This opera company has been in existence since 1910 and has since that time become one of the most important features of the University's musical life. It is an opera company of about 100 members, and its repertoire is very extensive. It has given many fine performances, and its members are all well-known musicians. The opera company is a very important part of the University's musical life, and it is a great credit to the University that it has been able to maintain such a high standard of performance.

The fourth of these is the fact that the University of Chicago has a very large and active ballet company. This ballet company has been in existence since 1910 and has since that time become one of the most important features of the University's musical life. It is a ballet company of about 100 members, and its repertoire is very extensive. It has given many fine performances, and its members are all well-known dancers. The ballet company is a very important part of the University's musical life, and it is a great credit to the University that it has been able to maintain such a high standard of performance.

The fifth of these is the fact that the University of Chicago has a very large and active symphony orchestra. This symphony orchestra has been in existence since 1910 and has since that time become one of the most important features of the University's musical life. It is a symphony orchestra of about 100 members, and its repertoire is very extensive. It has given many fine performances, and its members are all well-known musicians. The symphony orchestra is a very important part of the University's musical life, and it is a great credit to the University that it has been able to maintain such a high standard of performance.

The sixth of these is the fact that the University of Chicago has a very large and active chamber music ensemble. This chamber music ensemble has been in existence since 1910 and has since that time become one of the most important features of the University's musical life. It is a chamber music ensemble of about 100 members, and its repertoire is very extensive. It has given many fine performances, and its members are all well-known musicians. The chamber music ensemble is a very important part of the University's musical life, and it is a great credit to the University that it has been able to maintain such a high standard of performance.